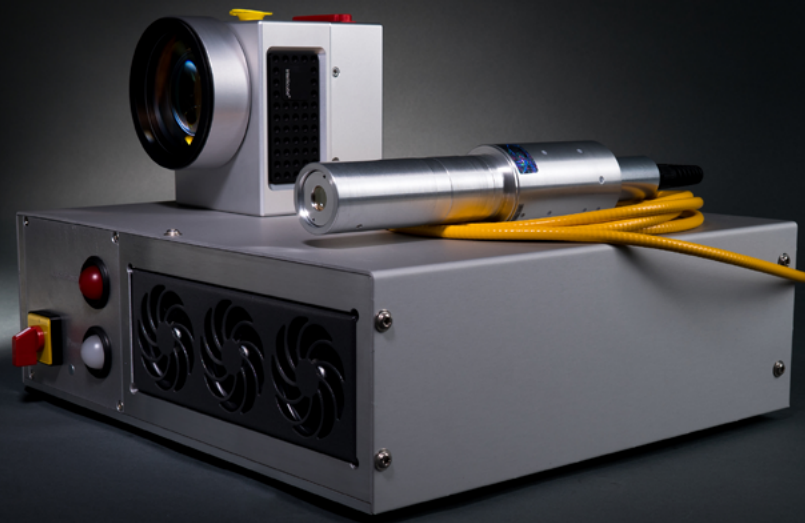




Marking systems

for process reliability and traceability



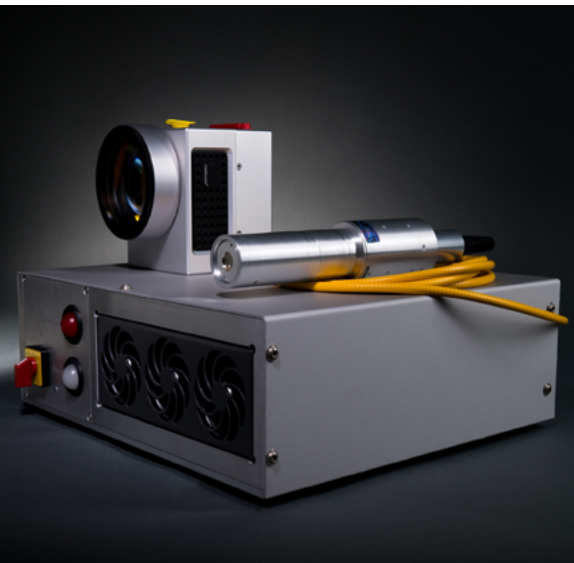
G D G

testsystems



Marking systems

for process reliability and traceability



fiber laser
with optional camera verification

General

In order to meet the requirements of industry 4.0, the integrateable marking systems make it possible to clearly identify positively tested armatures and stators.

Optional needle marker and laser marker are available.

Depending on the marking system, you can freely choose between the marking options Data Matrix Code (DMC), barcode and plain text.

Setup

The compact design allows the installation in semi-automatic and full-automatic test systems of the types AKG or AVA/SVA.

During the design particular emphasis was placed on process safety when integrating into the measurement process.

The advantages are:

Speed

- by means of electrical testing and marking in the same clamping device cycle times from 3 sec. can be achieved

Process reliability

- no additional manual interaction required for marking or camera verification

Traceability

- optionally, a camera on a camera adapter verifies the DMC quality according to ISO/IEC 15415 standard



needle marker

	semi-automatic	full-automatic	
	AKG	single station	round table
position of test sample during marking	in the same clamping device as for testing	in the same clamping device as for testing	in another clamping device
marking time	directly after passed test	directly after passed test	simultaneous testing
working step after marking	protection flap opens, removal of test sample possible	further transportation	lifting and further transportation

